

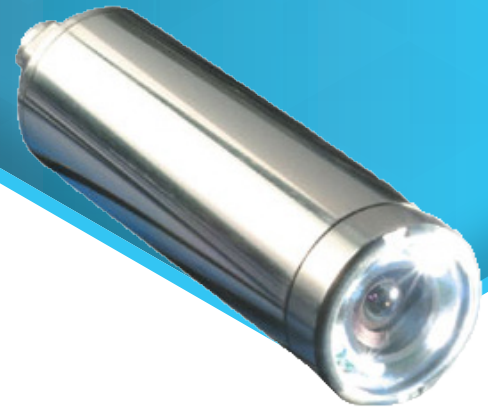


RADIATION TOLERANT CAMERA

C911™

Dotcam

Rugged, Low Cost Inspection Camera



FEATURES

- Low cost
- Rapid deployment
- High resolution color
- White LED lighting with variable intensity option
- Enhanced shock/vibration resistance for tooling applications
- Stainless steel housing
- Small in size
- Fully submersible camera/cable
- Low light capable
- A number of lens options providing different fields of view

APPLICATIONS

- General inspection
- Remote welding
- Robotic equipment
- End effectors
- Constricted area viewing
- Tool head viewing device

DESCRIPTION

When budget constraints and size are of the utmost concern, the Dotcam provides you with an inspection tool at a very low cost. Rugged and reliable, the Dotcam can be used in a wide range of applications. The system incorporates a state-of-the-art sensor that is fully automatic in its operation, providing high quality color pictures – even in low-lighting conditions the camera can switch over to supply monochrome images.

The Dotcam is available in stainless steel with glanded cable or quick release connector depending on your project needs. All versions provide lighting with an integral white LED lighting ring and operate under water to a depth of 60 m (200 ft).

With its ease of use, capability in low-light applications and extensive lens options, the Dotcam is an ideal “building block” for a wide range of inspection systems and can be easily adapted for specific tasks.

For higher radiation applications, please see our information on the Dotcam HR.



SPECIFICATIONS AND PERFORMANCE

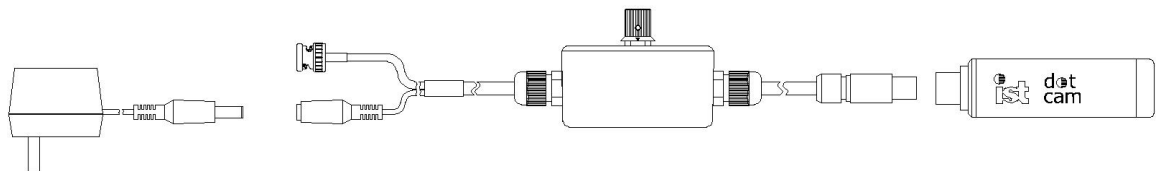
| Camera | |
|--|--|
| Image Sensor | 1/3.2 in. CMOS sensor |
| Temperature Rating (camera module) | 0 to 50 °C (32 to 122 °F) |
| Resolution | ≥800 TV lines |
| Total Dose | 100 Gy (10 ⁴ rad) |
| Angle of View (H) (approx. with standard lens) | 80° horizontal, 65° vertical, 93° diagonal |
| Construction | Stainless steel (SS) |
| Weight | 192 g (6.8 oz) |
| Min illumination | 0.05 lx (faceplate) |
| Signal to noise ratio | > 45 dB |
| Standard lens | 3.6 mm f/2.0 |
| Power source | DC 12 V ±10% (optional wall transformer included with glanded cameras and cable options) |
| Current consumption | 120 mA |
| Diameter | 29 mm (1.14 in.) |
| Length (with connector) | 110 mm (4.3 in.) |
| Length (with mated connector) | 147 mm (5.8 in.) |
| Length (with gland) | 110 mm (4.3 in.) |
| Lighting | Six LEDs |

| Cables | |
|--|---------------------------|
| Four core radiation tolerant PE inner insulation and polyurethane sheath | |
| Diameter | 6.2 mm (0.25 in.) |
| Length | 30 m (98.4 ft) (standard) |

| Part Numbers** | |
|----------------------|--|
| C911CMN53A/S PAL | Dotcam, 3.6mm lens, stainless steel, 3 pin connector (no cable) |
| C911CMN54A/S30M PAL | Dotcam, 3.6mm lens, stainless steel, glanded with 30m cable |
| C911CMN55A/S30M PAL | Dotcam, 3.6mm lens, stainless steel, variable lighting, glanded with 30m cable |
| C911CMP53A/S NTSC | Dotcam, 3.6mm lens, stainless steel, 3 pin connector (no cable) |
| C911CMP54A/S100 NTSC | Dotcam, 3.6mm lens, stainless steel, glanded with 100ft cable |
| C911CMP57A/S100 NTSC | Dotcam, 3.6mm lens, stainless steel, variable lighting, glanded with 100ft cable |
| C911CAB05A/100 | Cable with 3pin connector, 100ft length |

** Other lens and cable options are available; please contact Mirion Technologies for details.

*Other angles may be achieved with alternate optional lenses.



SPC-146-EN-A_DMD-10/2021

Copyright © 2021 Mirion Technologies, Inc. or its affiliates. All rights reserved. Mirion, the Mirion logo, and other trade names of Mirion products listed herein are registered trademarks or trademarks of Mirion Technologies, Inc. or its affiliates in the United States and other countries. Third party trademarks mentioned are the property of their respective owners.

Specifications may vary according to system configuration. We reserve the right to modify or amend the information herein without prior warning. Please contact your Mirion representative for further information.

Mirion Technologies (IST) Ltd and Mirion Technologies (Imaging), LLC are ISO 9001:2015 certified companies (certificates available on request or at www.mirion.com).

Please note that the products and accessories described in this data sheet may be subject to UK export control or US re-export control. Please check with your authorized representative when enquiring about this product.

